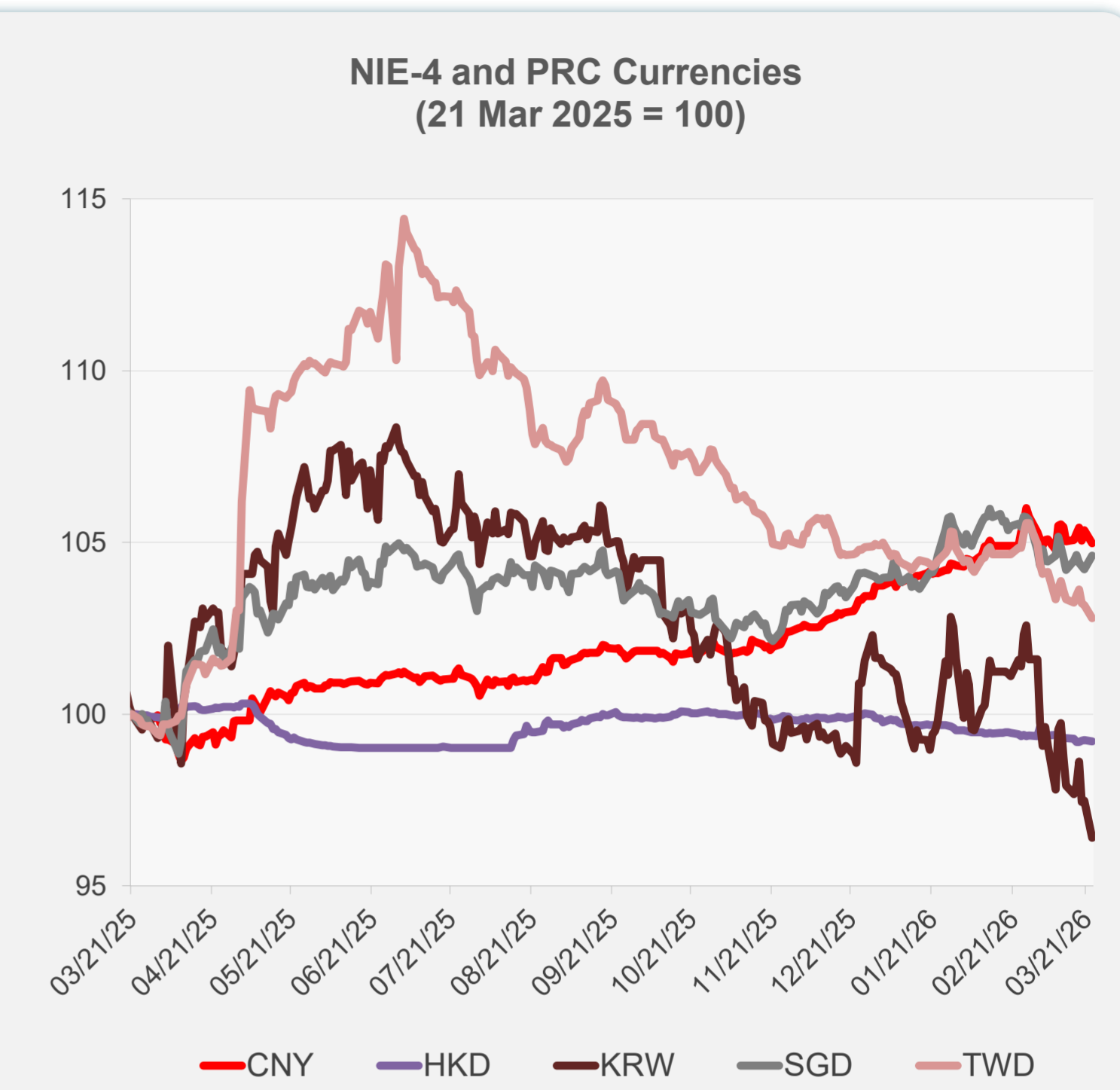
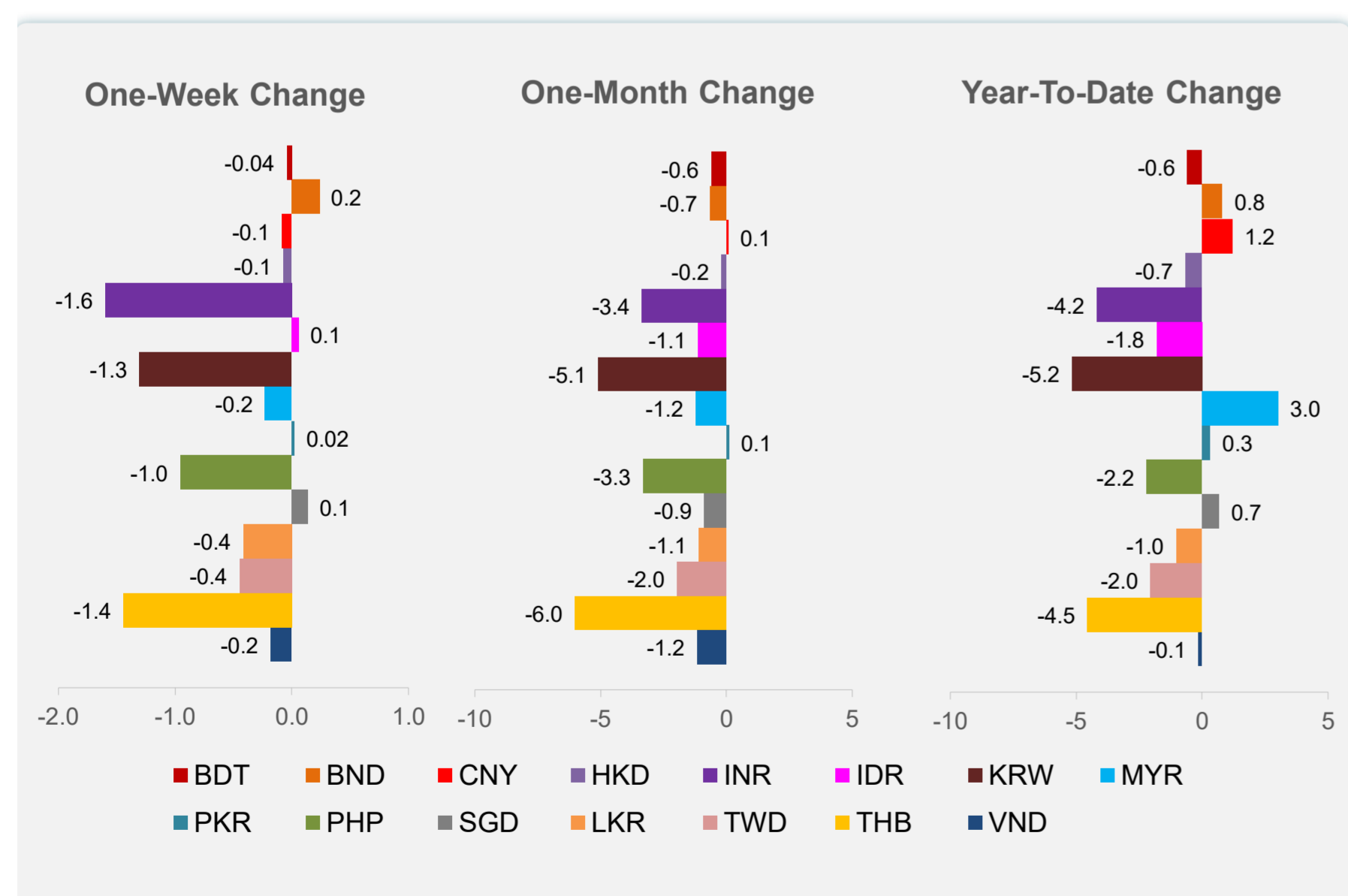
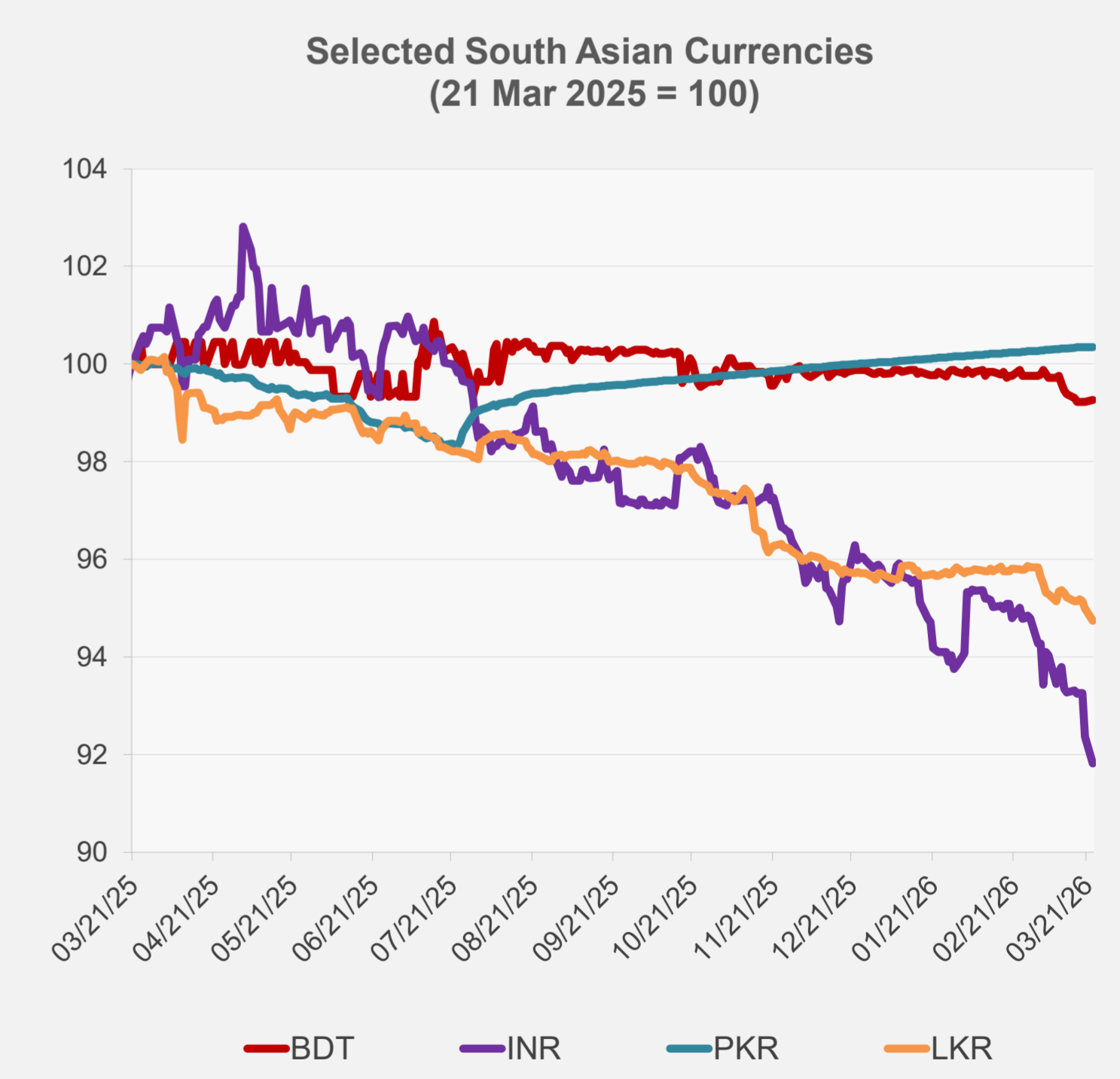
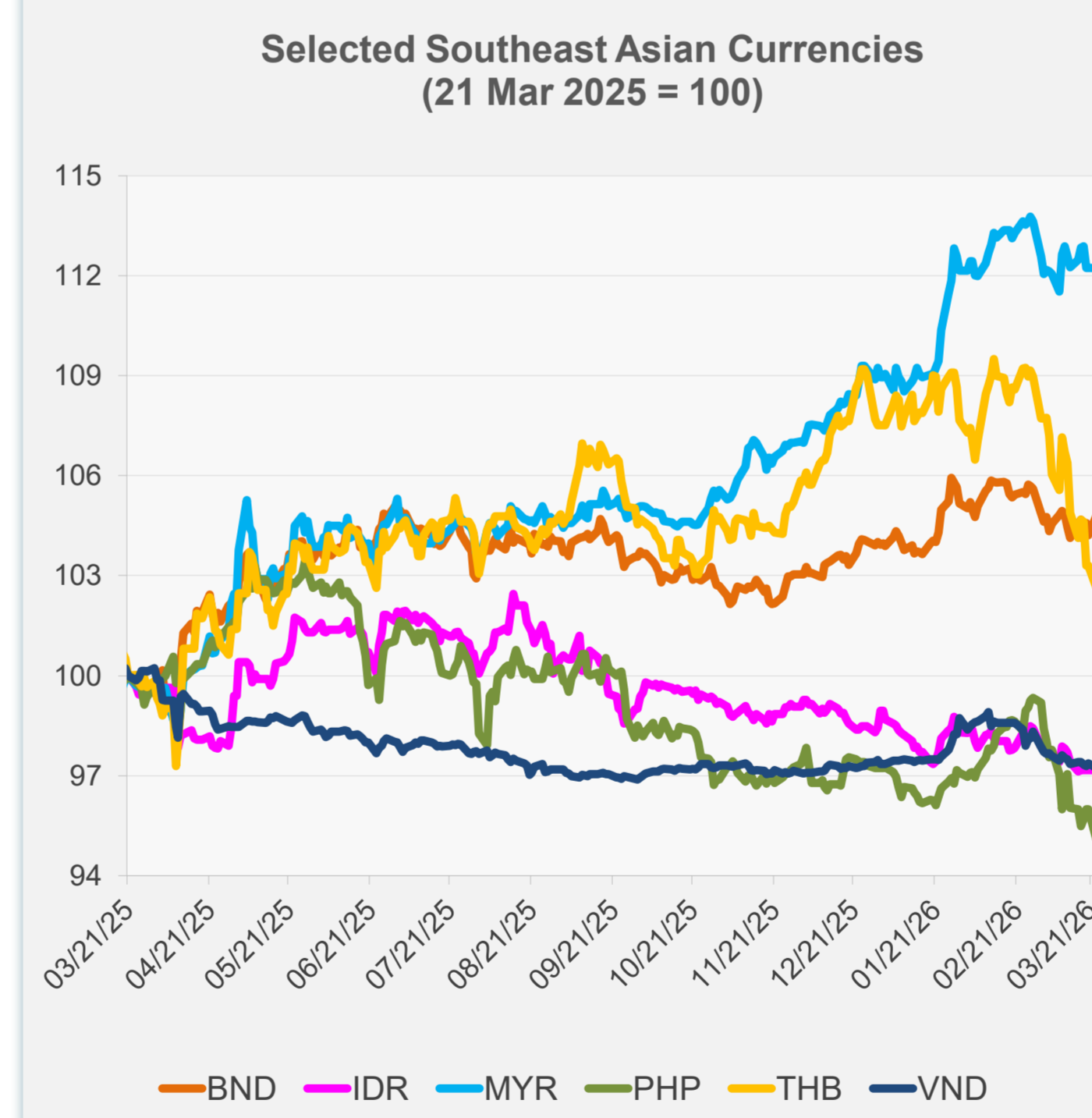


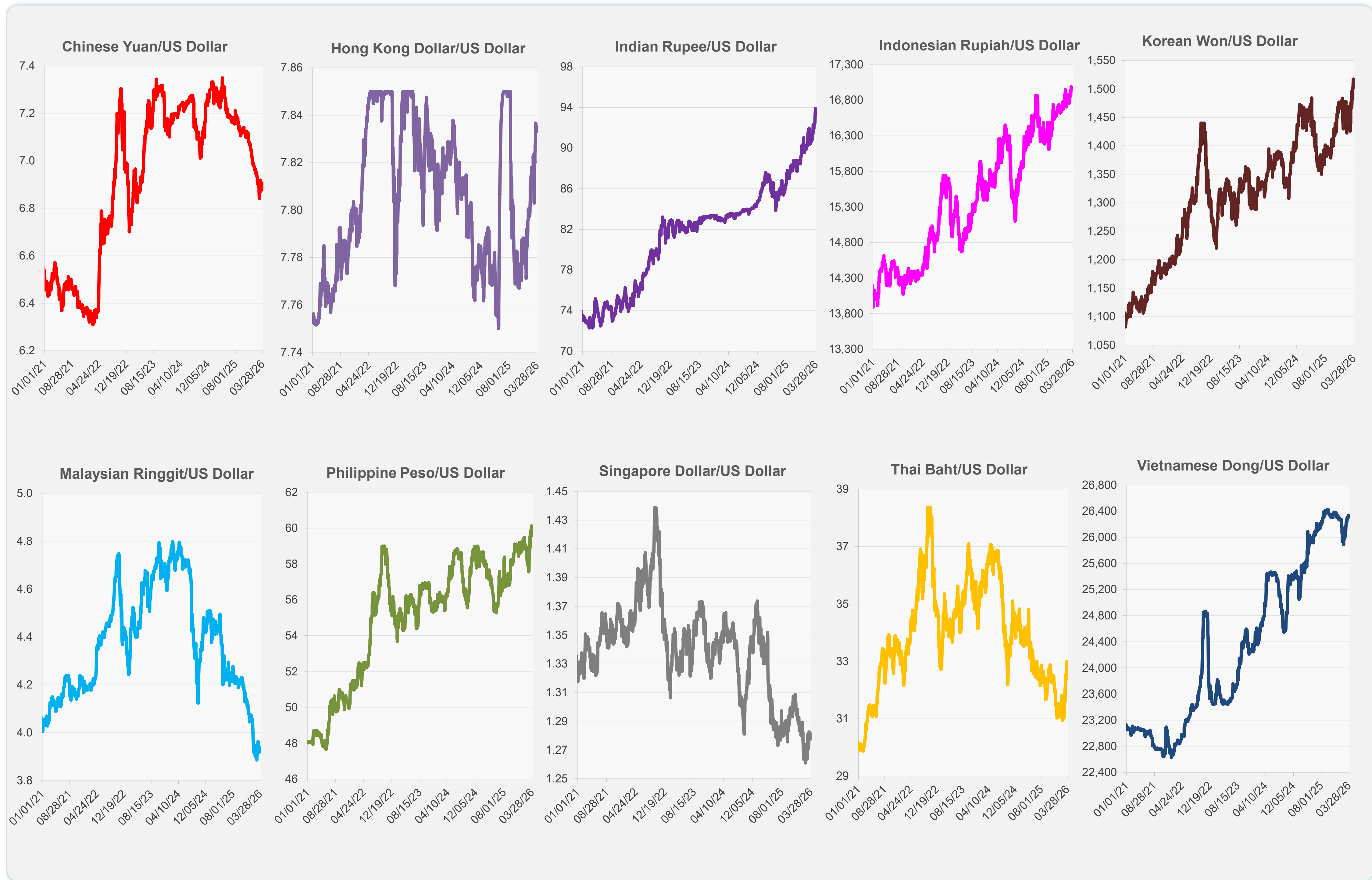
	Latest Closing	% change from Previous Day	% change from 01-Jan-26
Euro	0.86	0.35	-1.35
Japanese yen (JPY)	159.59	-0.24	-2.26
Bangladeshi taka (BDT)	122.95	0.04	-0.57
Brunei dollar (BND)	1.27	0.57	0.80
Chinese yuan (CNY)	6.91	-0.35	1.19
Hong Kong dollar (HKD)	7.84	-0.03	-0.66
Indian rupee (INR)	93.90	-0.59	-4.17
Indonesian rupiah (IDR)	16,980.00	0.00	-1.80
Korean won (KRW)	1,517.30	-1.10	-5.16
Malaysian ringgit (MYR)	3.94	0.00	3.01
Pakistan rupee (PKR)	279.22	0.00	0.32
Philippine peso (PHP)	60.13	-0.94	-2.20
Singapore dollar (SGD)	1.28	0.38	0.67
Sri Lanka rupee (LKR)	312.80	-0.27	-1.02
Taipei,China NT dollar (TWD)	32.09	-0.38	-2.04
Thai baht (THB)	33.01	-0.66	-4.55
Vietnamese dong (VND)	26,336.50	-0.15	-0.14



NIE = Newly Industrialized Economies



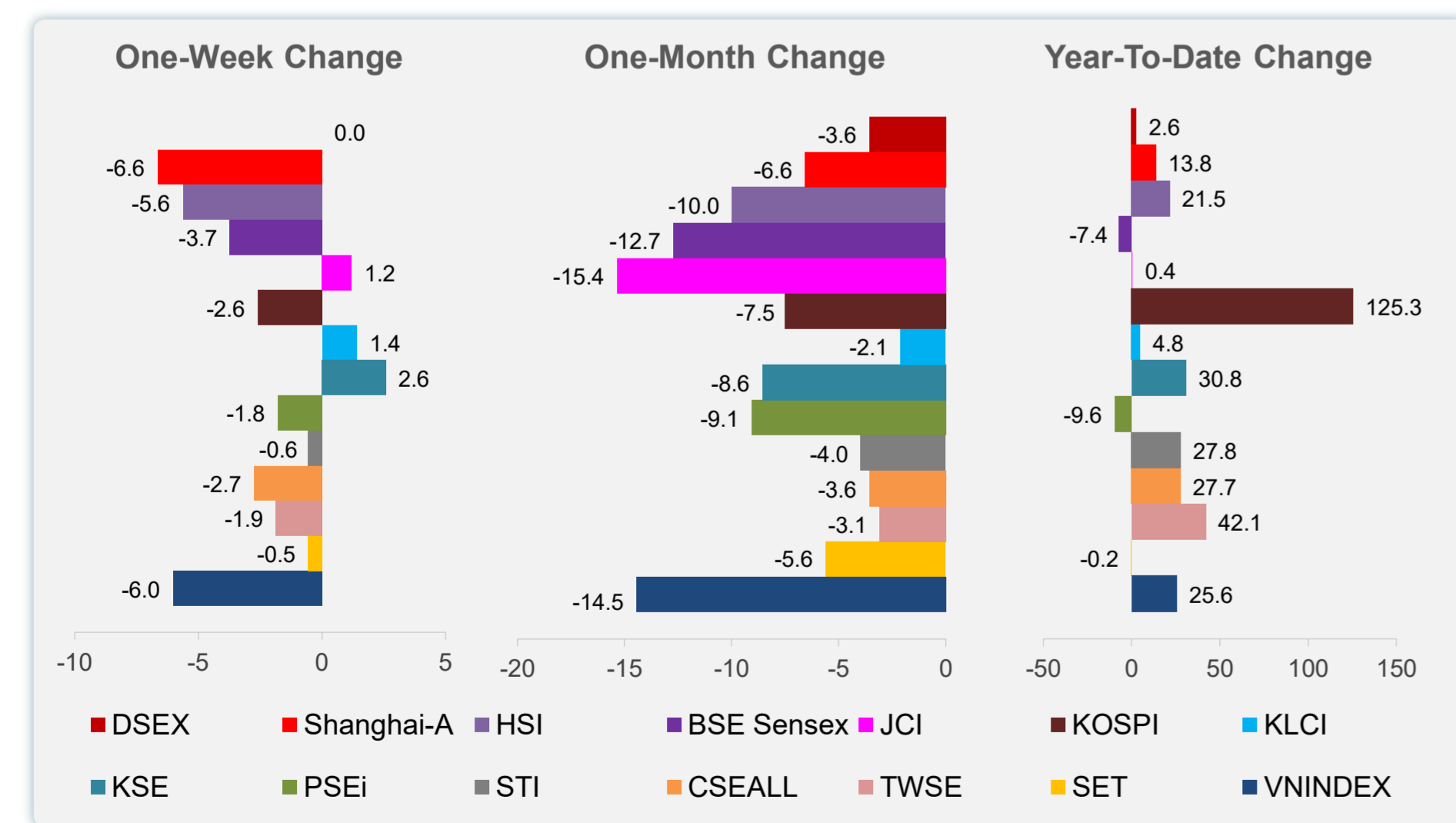
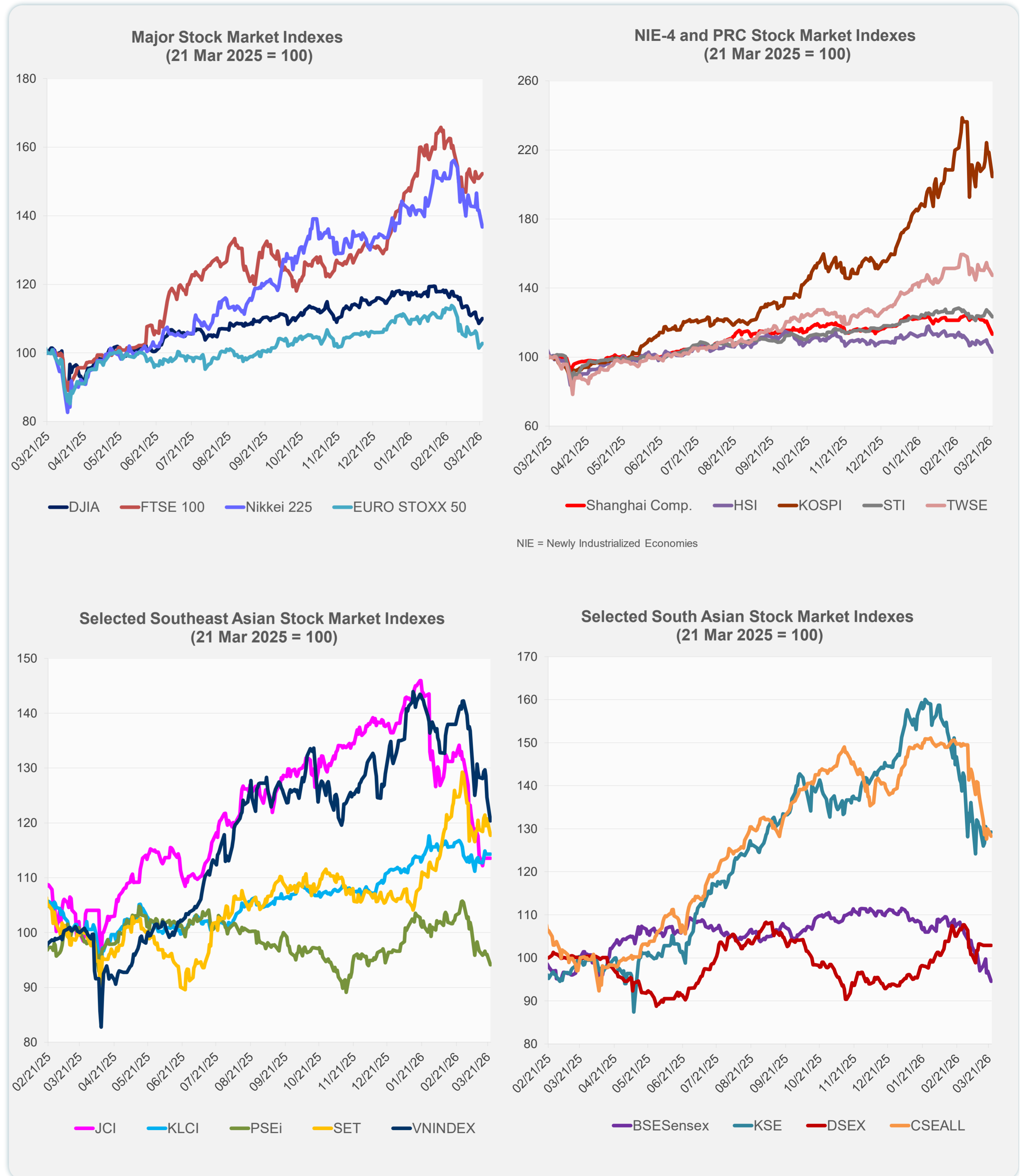
Note: Negative/Decreasing values indicate depreciation of local currency, and positive/increasing values indicate appreciation.
Source: ADB calculations using data from Bloomberg and Haver Analytics.



Source: Haver Analytics.

Daily Market Watch STOCK INDEXES

	Latest Closing	% change from Previous Day	% change from 01-Jan-25
US Dow Jones Ind Avg	46,208.47	1.38	8.61
US NASDAQ	21,946.76	1.38	13.65
US S&P 500	6,581.00	1.15	11.89
UK FTSE 100	13,168.16	0.92	61.12
EURO STOXX 50	5,574.32	1.33	13.86
Japan NIKKEI 225	51,515.49	-3.48	29.13
Bangladesh DSEX	5,353.94	0.00	2.60
PRC Shanghai Comp.	3,813.28	-3.63	13.77
Hong Kong, China HSI	24,382.47	-3.54	21.55
India BSE Sensex	72,696.39	-2.46	-7.40
Indonesia JCI	7,106.84	0.00	0.38
Korea, Rep. of KOSPI	5,405.75	-6.49	125.29
Malaysia KLCI	1,720.71	0.00	4.77
Pakistan KSE 100	153,083.70	0.00	30.83
Philippines PSEi	5,899.18	-1.98	-9.64
Singapore STI	4,841.30	-2.17	27.82
Sri Lanka CSEALL	20,364.97	-1.33	27.72
Taipei, China TWSE	32,722.50	-2.45	42.05
Thailand SET	1,397.34	-2.49	-0.20
Viet Nam VNINDEX	1,591.17	-3.44	25.61



Sources: ADB calculations using data from Bloomberg and CEIC Data Company.



Sources: ADB calculations using data from Bloomberg and CEIC Data Company.

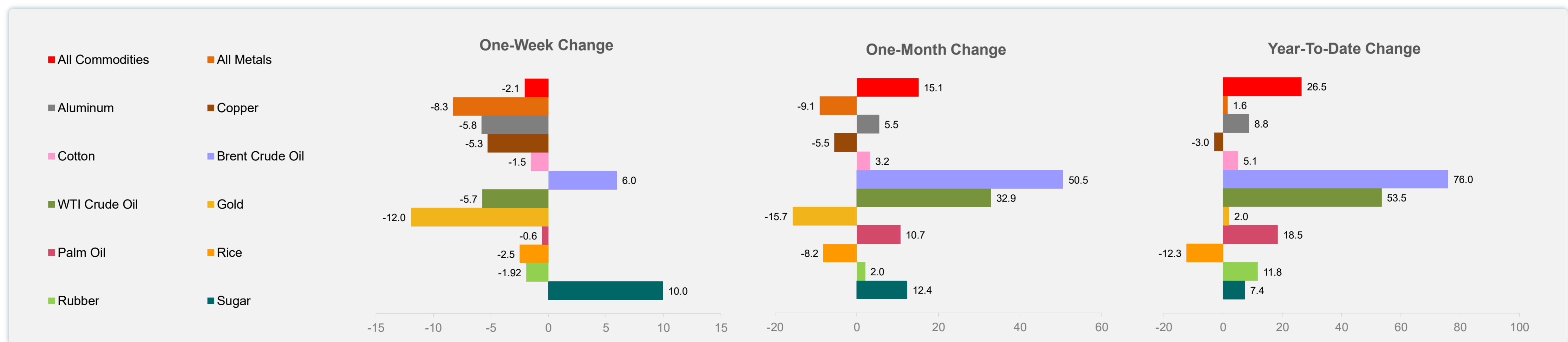
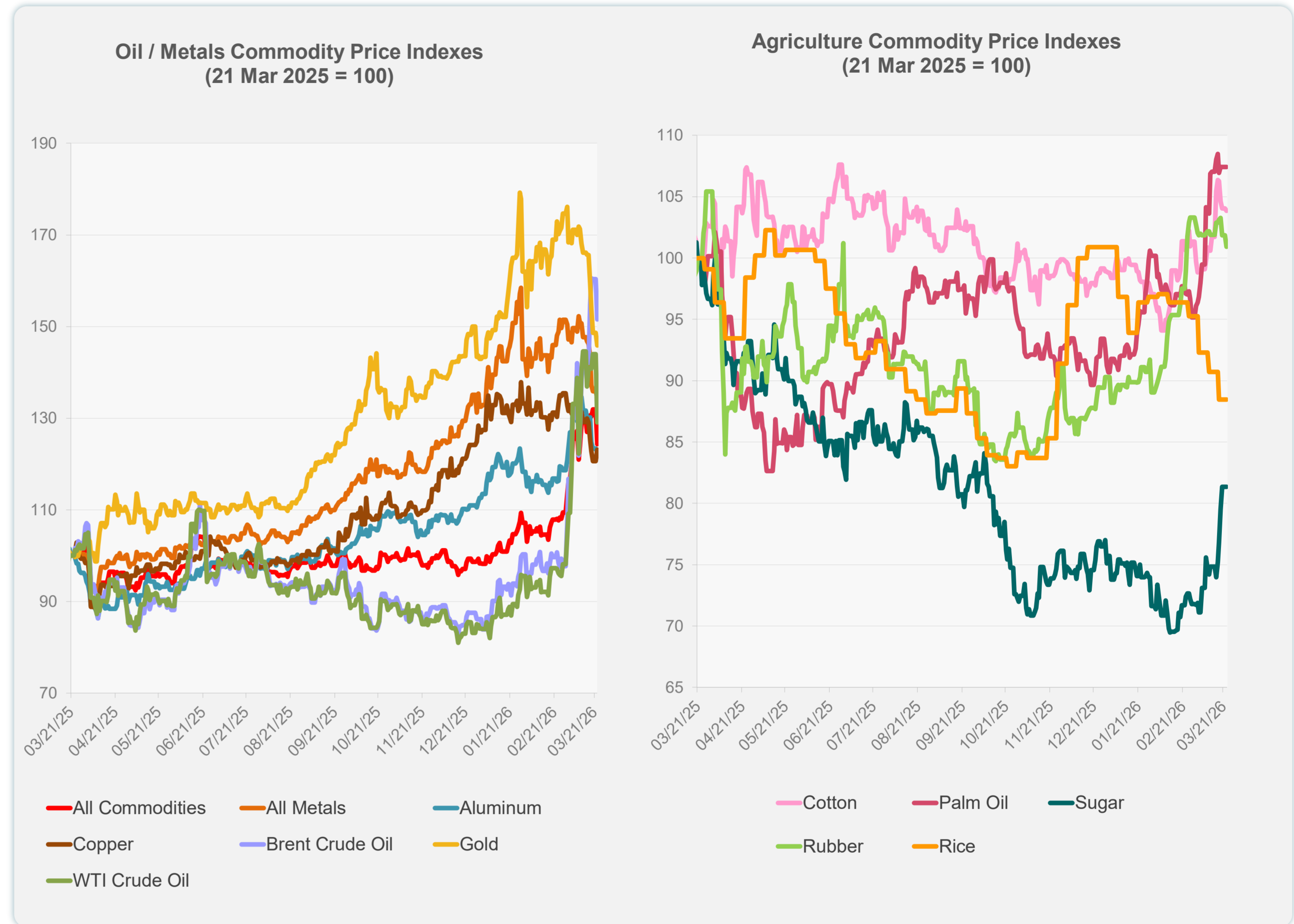
Daily Market Watch
COMMODITY PRICES

24 March 2026, 9:00 AM Manila

	Unit	Latest Closing	% change from Previous Day	% change from 01-Jan-26
S&P All Commodities	US\$	694.03	-5.72	26.53
S&P All Metals	US\$	450.67	-0.92	1.56
Aluminum	US\$/metric ton	3,229.63	-0.71	8.82
Copper	US\$/metric ton	12,081.74	2.09	-2.98
Cotton	US cents/lb	65.18	-0.20	5.10
Brent Crude Oil	US\$/barrel	109.89	-5.47	75.97
WTI Crude Oil	US\$/barrel	88.13	-10.36	53.48
Gold	US\$/troy oz	4,407.18	-1.90	2.03
Palm Oil	US\$/metric tonne	1,147.55	0.00	18.47
Rice ¹	US\$/metric ton	391.00	0.00	-12.33
Rubber ²	US\$/kg	240.30	-0.91	11.77
Sugar	US cents/lb	15.89	0.00	7.44

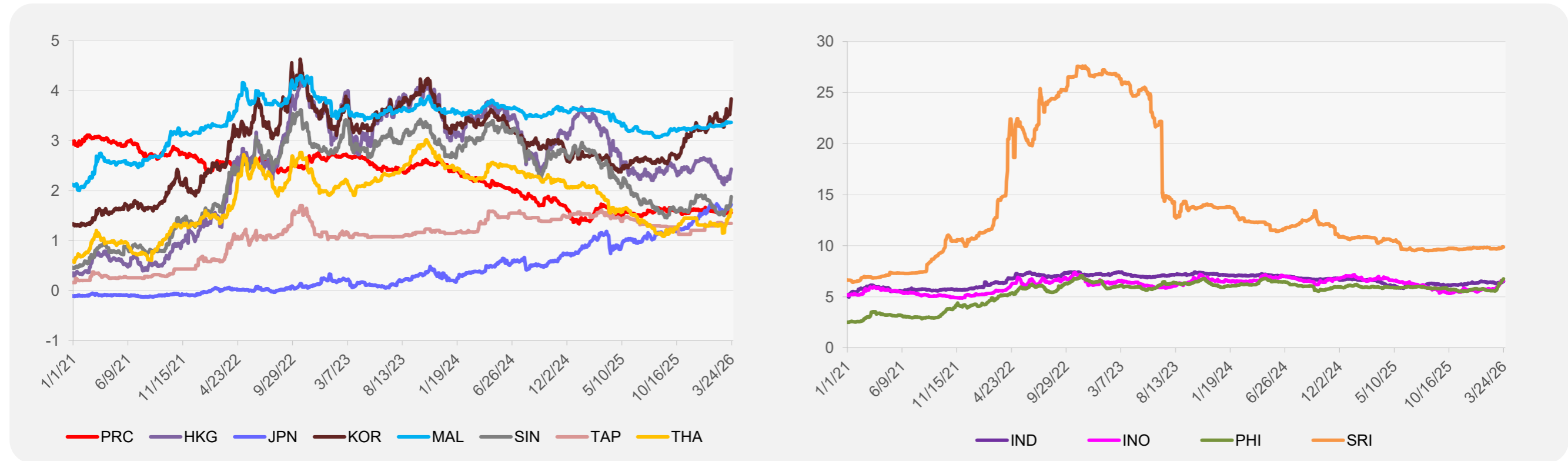
¹ Latest closing price from 18 March 2025.

² Singapore Exchange, Ribbed Smoked Sheet Rubber.

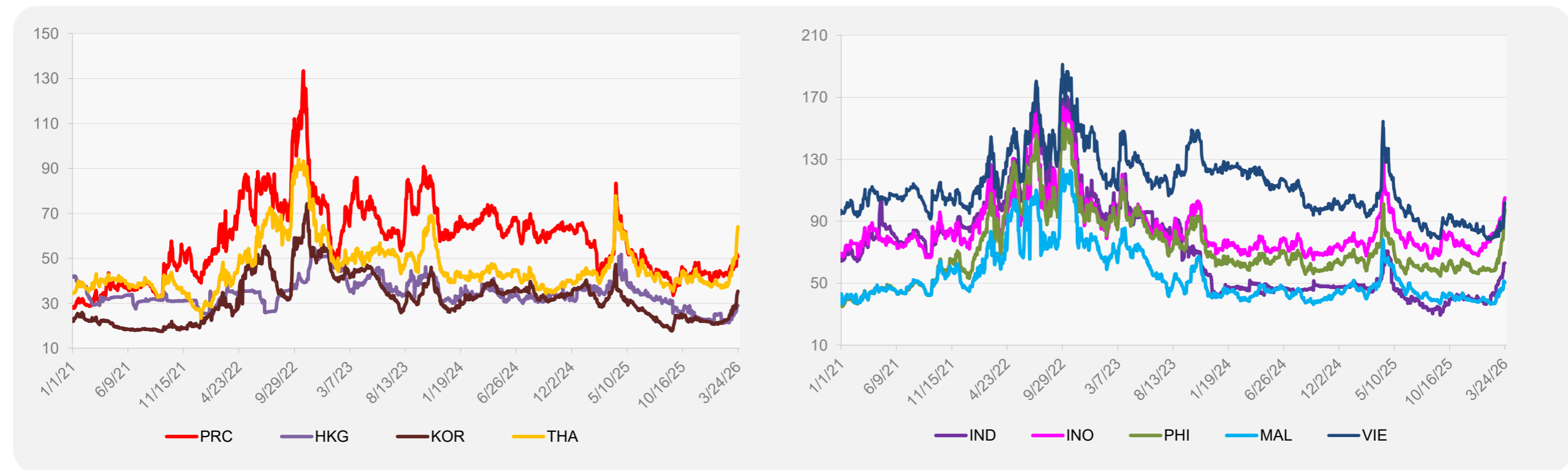


Source: ADB calculations using data from Bloomberg.

5-YEAR LOCAL CURRENCY GOVERNMENT BOND YIELDS (%)



5-YEAR CREDIT DEFAULT SWAP¹



¹ In USD and based on sovereign bonds.
Source: ADB calculations using data from Bloomberg.